

# 12 Bees to look for!

7 Bumblebees, 4 solitary bees (smaller) and the honey bee

All of the bumblebees pictured here are queens, males and workers (also female). They can have different colours but as queens are the ones we first see in spring (they have just come out from hibernation) we are going to keep it simple and focus on them.



**Buff-tailed Bumblebee, Queen** (©Lucie Aggas)  
This is probably the most common garden bumblebee in spring. The yellow bands are an orange/egg yellow, and the white band at the end of the tail (thorax) has a buff/soft edge to it.



**Tree Bumblebee, Queen** (©Lucie Aggas)  
This bee only came to the UK from Europe in 2009 and is now found as far north as Scotland. It's a distinctive bee, with an orange brown thorax and a black abdomen with a white tip. They often nest in trees and bird boxes.



**Garden Bumblebee, Queen** (©Louise Hislop)  
It has a yellow band in the middle (end of thorax, top of abdomen). It also has a long face and tongue so it's good at feeding from deep flowers like foxgloves.



**Early Bumblebee, Queen** (©Louise Hislop)  
This is normally a smaller bee than the buff and white tailed bees. It has a very small orangey tip at the end of the abdomen.



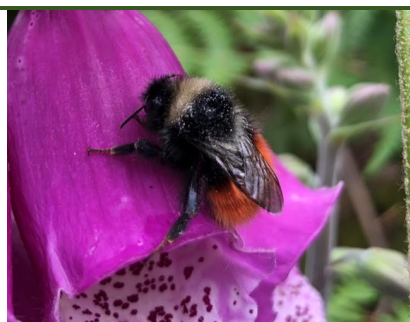
**Common Carder Bumblebee, Queen** (©Louise Hislop)  
It is brown all over but can be various shades of dark to yellow brown.



**Red Tailed Bumblebee, Queen** (©Louise Hislop)  
Nice and easy to identify, black with a red tail.



**Ashy Mining Bee, Female**  
(©Louise Hislop)  
One of the most common and distinctive solitary bees. A black and grey species which makes small burrows in sandy ground.



**Bilberry Bumblebee, Queen**  
(© Rachel Richards)  
This is a rare bee found more often in upland and moorland habitats. Take a photo for us if you think you have spotted this one please.



**Red Mason Bee**  
(© Rachel Richards)  
This is the most common mason bee which is often found in gardens. You may find it looking for nest holes between bricks, especially on the sunny side of your house or garden wall. Solitary bees like south facing nesting sites.



**Leaf Cutter Bee** (©Rachel Richards)  
There are a few different species of leaf cutters but look out for bees carrying little cut sections of leaf or garden plants. They stick the bits of leaf together to make nest cells for their young. The female don't have pollen hairs on their legs, but under the end of the abdomen.



**Tawny Mining Bee, Female**  
(©Rachel Richards)  
The female is a lovely bright red-brown colour all over. They nest in the ground.



**Honey Bee**  
(©Paul Wiles)  
It's abdomen is quite long, and it can be all dark or have some more orangey segments nearer the thorax. They have hairy eyes and long legs which hang down when they fly.

**White-tailed bumblebee**- There is no picture for this one. It is very similar to the buff-tailed but the yellow bands are more of a lemon yellow and the white band on the tail has no buff edge.